



## *Follow me on my Scenic River Cruise Journey from Amsterdam*

### Day 6-7: Arnhem – Amsterdam Disembarkation

Our ship docked before breakfast in Arnhem-famous for many reasons including the failed WWII Operation Market Garden- an attempt by the allies to secure this bridge and bring the war to an end led to 10 days of fierce fighting and was inspiration for A Bridge Too Far movie. Many did the Airbourne Museum excursion and found it very moving. I chose the excursion to Palais Het Loo- about a 30-minute drive which showcases this amazing royal palace and grounds built in the late 1600s by the Dutch royal family and still a favourite residence by the current king and his family. The grounds are extensive and inside the palace you can visit the east wing featuring furnishings and art from the original royal couple who built the estate- William and Mary. The picture gallery and bed chambers are especially stunning. The west wing features the private quarters of Queen Wilhelmina from 19th and 20th century- a young girl whose childhood was cut short when she became the heir to the throne at 10 years of age and had to put her dolls away forever. She is the present king's great grandmother. Her lifetime of service made me think of the similar path Queen Elizabeth II's life took although she was an adult when she became queen.

This palace truly provides insights into Royal life that I had not considered or encountered before- if royalty interest you it is a must see!

We set sail mid afternoon and had the opportunity to relax while sailing in the daytime. Although we were also doing training while onboard, the regular cruise itinerary would be a well balanced schedule of a choice of enlightening and interesting excursions plus time when you are sailing and able to relax on your balcony or go up to the sun deck or other public areas- enjoying a hot beverage you make at the drink stations or the talented bar staff creates for you. You will find the cultural excursions appealing but also there are those random moments.... the grandfather and little boy on the rivers edge pausing to admire the ship and wave to you; the cars and bicycles stopped on either side of the river while they wait for a ship to pass until the ferry can launch; the sheep and cattle munching on the river's edge, the cargo ships laden with various goods who ply the river regularly and can even end up in the same lock as your ship and yes you will be fascinated by transiting many locks. It is an engineering marvel so remember the river and its inhabitants are as much a part of what you will experience as the excursions will be and that is one of the most special aspects of river cruising.

After one last enjoyable evening and delicious meal, we were up early the next morning to disembark-between 830- 930 for either a transfer to Amsterdam train station or the airport. We had ended the cruise in Zandam rather than Amsterdam which was handled expertly by the amazing crew. River cruising can sometimes need to adjust your docking location for a variety of reasons and that is ok because this expert team has your comfort and security always top of mind. This is another really impressive aspect of river cruising. These are intimate sized ships, and you will get to know and love the crew who look after you so well.

Today's Photos.



Donna Elliott, Vacation Travel Advisor | TICO Certified  
1-866-926-4070 ext 1203 | [delliott@harveysttravel-cwt.com](mailto:delliott@harveysttravel-cwt.com)  
<https://www.virtuoso.com/advisor/delliott>





Donna Elliott, Vacation Travel Advisor | TICO Certified  
1-866-926-4070 ext 1203 | [delliott@harveysttravel-cwt.com](mailto:delliott@harveysttravel-cwt.com)  
<https://www.virtuoso.com/advisor/delliott>





Donna Elliott, Vacation Travel Advisor | TICO Certified  
1-866-926-4070 ext 1203 | [delliott@harveysttravel-cwt.com](mailto:delliott@harveysttravel-cwt.com)  
<https://www.virtuoso.com/advisor/delliott>



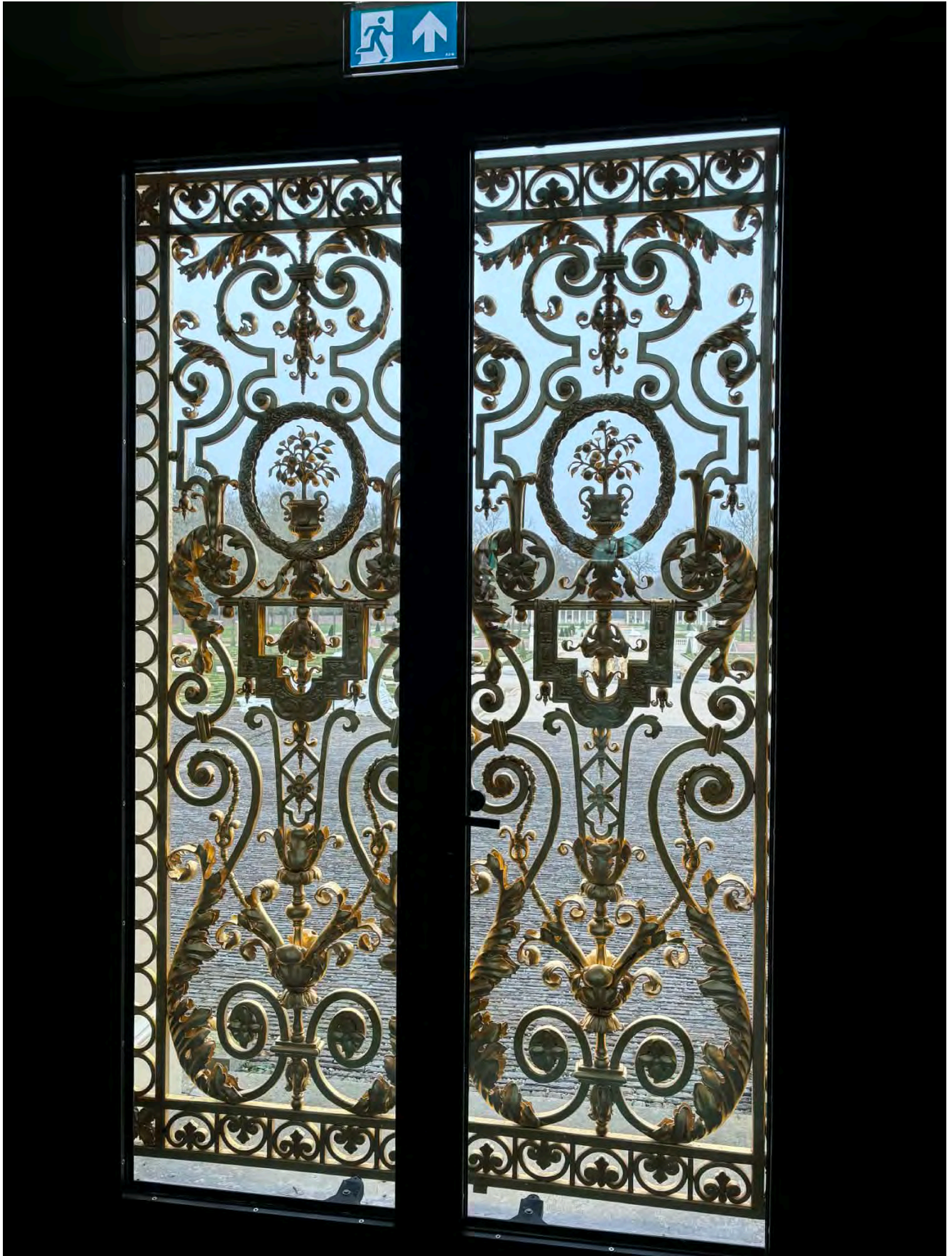


Donna Elliott, Vacation Travel Advisor | TICO Certified  
1-866-926-4070 ext 1203 | [delliott@harveysttravel-cwt.com](mailto:delliott@harveysttravel-cwt.com)  
<https://www.virtuoso.com/advisor/delliott>











Donna Elliott, Vacation Travel Advisor | TICO Certified  
1-866-926-4070 ext 1203 | [delliott@harveysttravel-cwt.com](mailto:delliott@harveysttravel-cwt.com)  
<https://www.virtuoso.com/advisor/delliott>

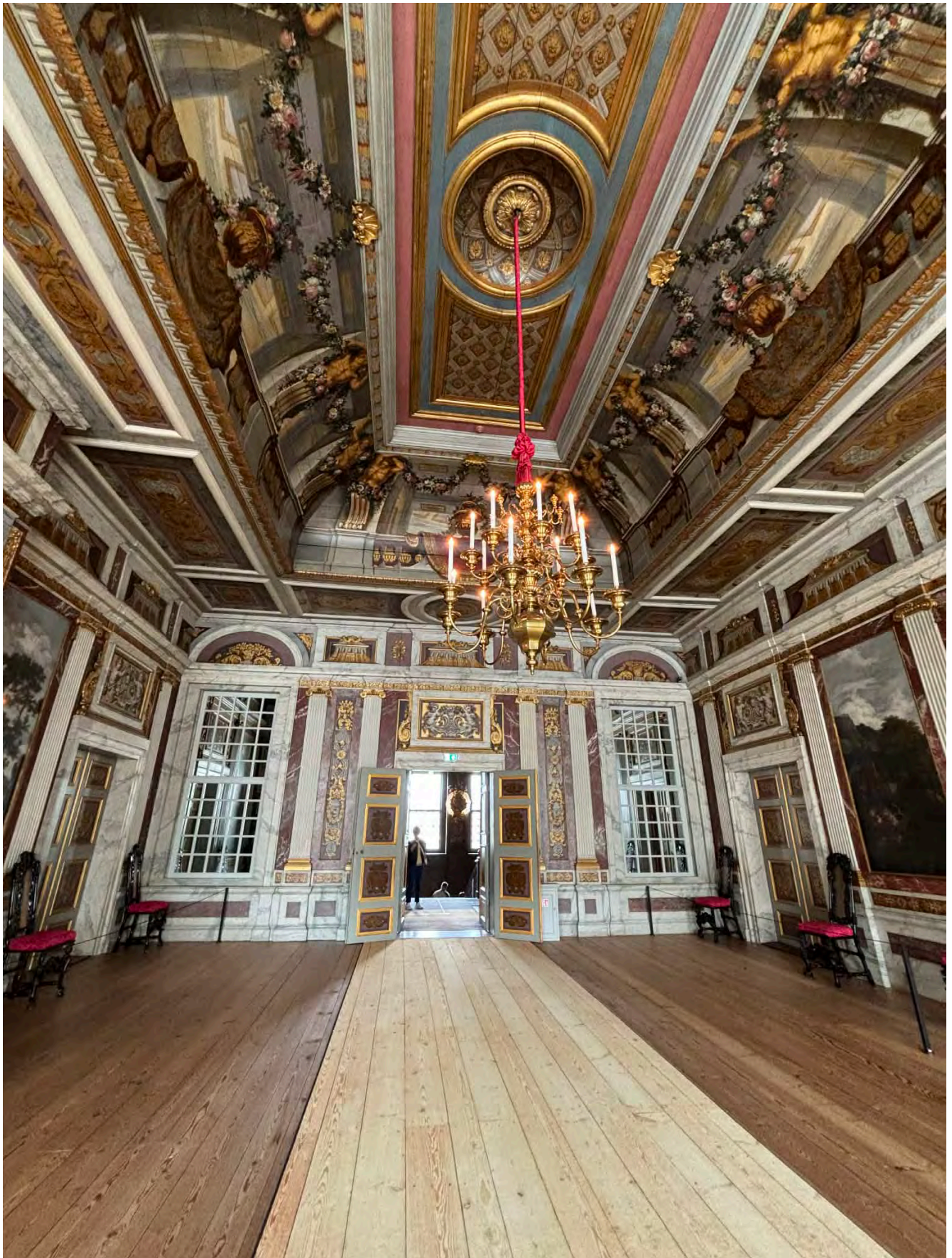




Donna Elliott, Vacation Travel Advisor | TICO Certified  
1-866-926-4070 ext 1203 | [delliott@harveysttravel-cwt.com](mailto:delliott@harveysttravel-cwt.com)  
<https://www.virtuoso.com/advisor/delliott>



Donna Elliott, Vacation Travel Advisor | TICO Certified  
1-866-926-4070 ext 1203 | [delliott@harveysttravel-cwt.com](mailto:delliott@harveysttravel-cwt.com)  
<https://www.virtuoso.com/advisor/delliott>



Donna Elliott, Vacation Travel Advisor | TICO Certified  
1-866-926-4070 ext 1203 | [delliott@harveysttravel-cwt.com](mailto:delliott@harveysttravel-cwt.com)  
<https://www.virtuoso.com/advisor/delliott>



Donna Elliott, Vacation Travel Advisor | TICO Certified  
1-866-926-4070 ext 1203 | [delliott@harveysttravel-cwt.com](mailto:delliott@harveysttravel-cwt.com)  
<https://www.virtuoso.com/advisor/delliott>



Donna Elliott, Vacation Travel Advisor | TICO Certified  
1-866-926-4070 ext 1203 | [delliott@harveysttravel-cwt.com](mailto:delliott@harveysttravel-cwt.com)  
<https://www.virtuoso.com/advisor/delliott>

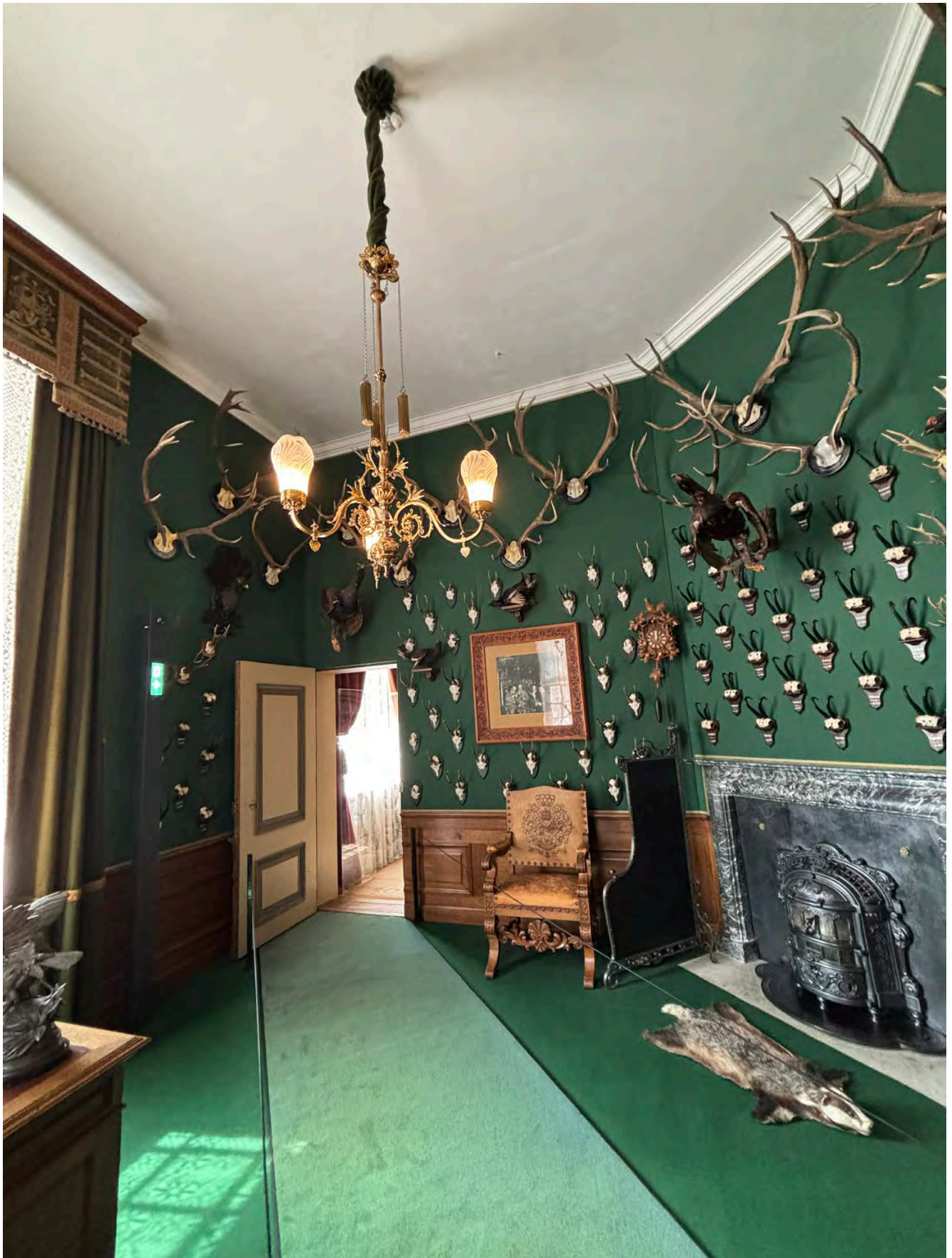


Donna Elliott, Vacation Travel Advisor | TICO Certified  
1-866-926-4070 ext 1203 | [delliott@harveysttravel-cwt.com](mailto:delliott@harveysttravel-cwt.com)  
<https://www.virtuoso.com/advisor/delliott>





Donna Elliott, Vacation Travel Advisor | TICO Certified  
1-866-926-4070 ext 1203 | [delliott@harveysttravel-cwt.com](mailto:delliott@harveysttravel-cwt.com)  
<https://www.virtuoso.com/advisor/delliott>



Donna Elliott, Vacation Travel Advisor | TICO Certified  
1-866-926-4070 ext 1203 | [delliott@harveysttravel-cwt.com](mailto:delliott@harveysttravel-cwt.com)  
<https://www.virtuoso.com/advisor/delliott>





11 Aug 1913  
 10 Aug 1912  
 27 Oct 1912  
 18 Aug 1912  
 10 Aug 1912  
 25 Aug 1912  
 2 Aug 1912  
 23 Aug 1914  
 13 Aug 1911  
 31 Mar 1914  
 7 Dec 1912  
 11 Aug 1911  
 11 Aug 1911

Donna Elliott, Vacation Travel Advisor | TICO Certified  
 1-866-926-4070 ext 1203 | [delliott@harveysttravel-cwt.com](mailto:delliott@harveysttravel-cwt.com)  
<https://www.virtuoso.com/advisor/delliott>





Donna Elliott, Vacation Travel Advisor | TICO Certified  
1-866-926-4070 ext 1203 | [delliott@harveysttravel-cwt.com](mailto:delliott@harveysttravel-cwt.com)  
<https://www.virtuoso.com/advisor/delliott>









Donna Elliott, Vacation Travel Advisor | TICO Certified  
1-866-926-4070 ext 1203 | [delliott@harveysttravel-cwt.com](mailto:delliott@harveysttravel-cwt.com)  
<https://www.virtuoso.com/advisor/delliott>



Donna Elliott, Vacation Travel Advisor | TICO Certified  
1-866-926-4070 ext 1203 | [delliott@harveysttravel-cwt.com](mailto:delliott@harveysttravel-cwt.com)  
<https://www.virtuoso.com/advisor/delliott>





# SCENIC<sup>o</sup> Zaandam

25th of March, 2026  
Wednesday



Ship's phone number:  
00 49 173 615 3862  
Cruise Director's phone number:  
00 49 162 209 5812

## Disembarkation Program

Dear Guest,

Thank you once again for traveling with us.

Before you leave your suite on this morning, please make sure you have emptied your safe, drawers, and wardrobe. Check in the bathroom and under the bed to make sure you take all your belongings and please leave your safe open.

Breakfast in Crystal Dining  
Breakfast 06:00 - 8:00.

We regret that we are unable to offer Room Service this morning.  
All crew will be assisting with disembarkation procedures/ luggage handling.

Luggage & Luggage Tags  
Please place your luggage out at the time indicated. Please make yourself comfortable in the Lounge until your departure time and kindly return your cabin keys to Reception.

Electronic Survey  
Your feedback is very important to us - please be so kind as to take a few minutes to fill out our e-survey. A link was sent to the email address you confirmed at the Reception on Embarkation.

Captain Tibor, Hotel Director Carmen, Cruise Director Tadej  
and the entire Crew of the Scenic Jewel would like to thank you all for choosing Scenic for your cruise.

We wish you a safe journey home, or wherever your travel adventures take you!

*Thank you!*  
AND FAREWELL



**COLD & HOT APPETIZERS**

- CLASSIC BEEF TARTAR  
Pommes, horseradish, onion, green, mustard, wild onion
- CHEF SALAD & BANCH DRESSING  
Cucumber, lettuce, shaved carrots, feta, turkey, tomatoes, egg, basil
- FOREST MUSHROOMS A LA CRÈME  
Wild mushrooms, vegetable stock, parmesan
- CREAM OF DUTCH CHEESES  
Grapes, potatoes

**MAIN COURSES**

- PORK STEAK "STRONBERG STYLE" ONION - BUTTER CRUST  
Pork jus, smoked sweet potatoes, roasted vegetables
- GRILLED BARBAMUNDI FILET "NICOSE"  
Beef jus, olive, green beans, tomato confit, olive tapenade, beurre blanc
- STUFFED ZUCCHINI  
Grat cheese, Italian artichoke - tomato rabbit, almond, Arugula salad

**DESSERT & CHEESE SELECTION**

- DULCHE DE LECHE CHOCOLATE TART  
Salted buttercream, mocha cream
- FRESH FRUITS - blue grapes, grapefruit, red apple  
Sautéed buttercream, mocha cream
- ICE COUPE - walnut ice cream - hazelnut almonds - caramel sauce - blueberries
- CHEESE SELECTION - fruit chutney  
Borghese blu, boursin, goats

Local favorites and regional dishes

Vegetarian dishes

Dushan Group  
Restaurant Manager

Mumin Sopran  
Executive Chef

**VEGETARIAN SELECTION**

- FOREST MUSHROOMS A LA CRÈME  
Wild mushrooms, vegetable stock, parmesan
- STUFFED ZUCCHINI  
Grat cheese, Italian artichoke - tomato rabbit, almond, Arugula salad
- DULCHE DE LECHE CHOCOLATE TART  
Salted buttercream, mocha cream

**CHEF MUMIN'S RECOMMENDATION**

- FOREST MUSHROOMS A LA CRÈME  
Wild mushrooms, vegetable stock, parmesan
- PORK STEAK "STRONBERG STYLE" ONION - BUTTER CRUST  
Pork jus, smoked sweet potatoes, roasted vegetables
- DULCHE DE LECHE CHOCOLATE TART  
Salted buttercream, mocha cream

**WINE SUGGESTION**

- Duncker Chardonnay, Chardonnay, Hungary
- Duncker Blaufrankisch, Chardonnay, Hungary

**THE ALTERNATE CHOICE**

- cheese salad / garden salad
- salmon fillet / bone-in chicken breast / salmon steak / vegetable terrine
- side dish of the day / steak fries / herb butter / green pea soup / sauce
- barbecue sauce

Our dishes may contain allergens. Cereals, Dairy, Fish, Legumes, Gluten, Mustard, Peanuts, Nuts, Sesame, Crustaceans, Molluscs, Soy, Sulphites, Eggs.

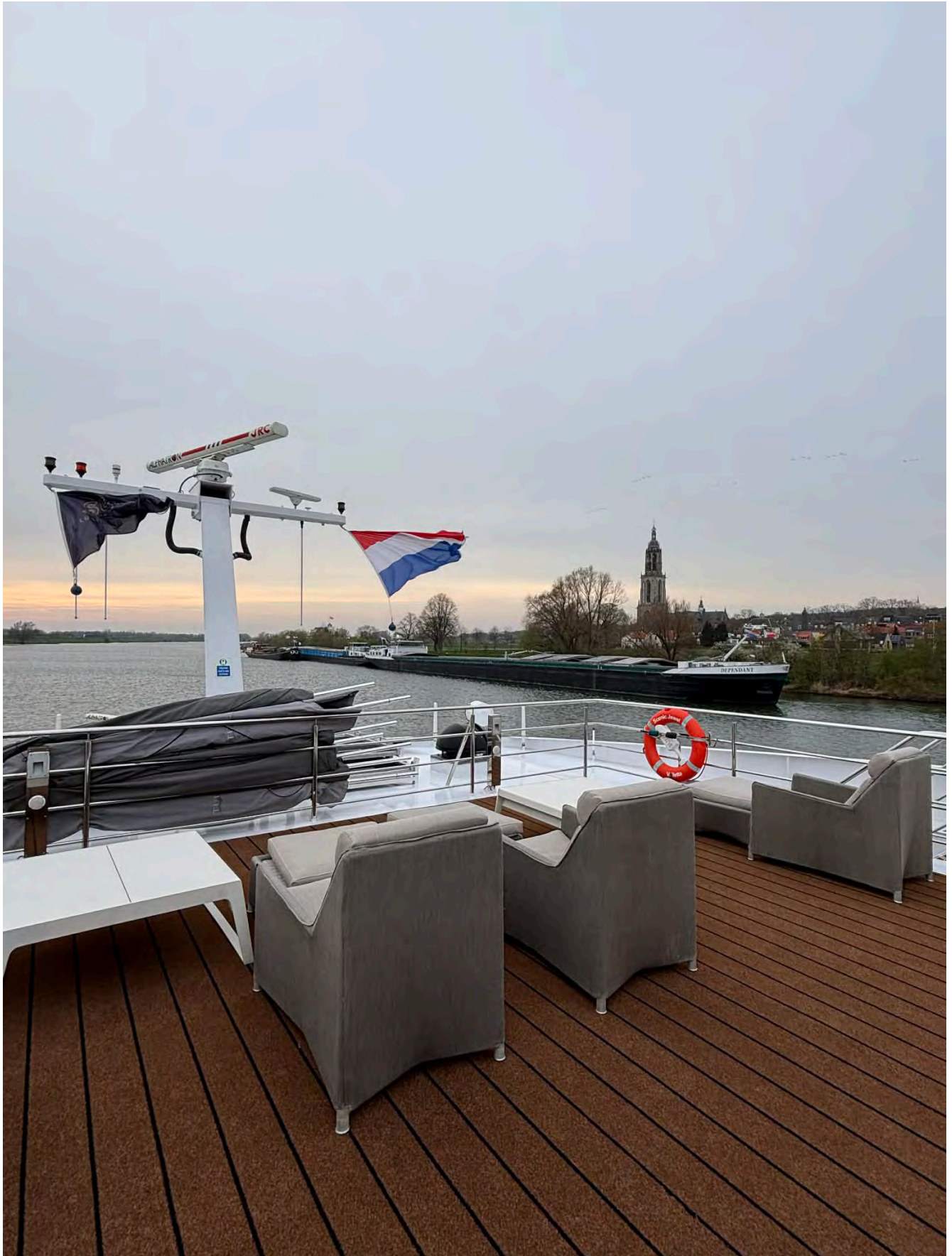
If you have a food allergy, intolerance, or sensitivity, please inform your waiter or restaurant manager prior to ordering. Eating raw, rare-marinated, or partially cooked foods such as meat, fish and eggs increases the risk of food borne illnesses.





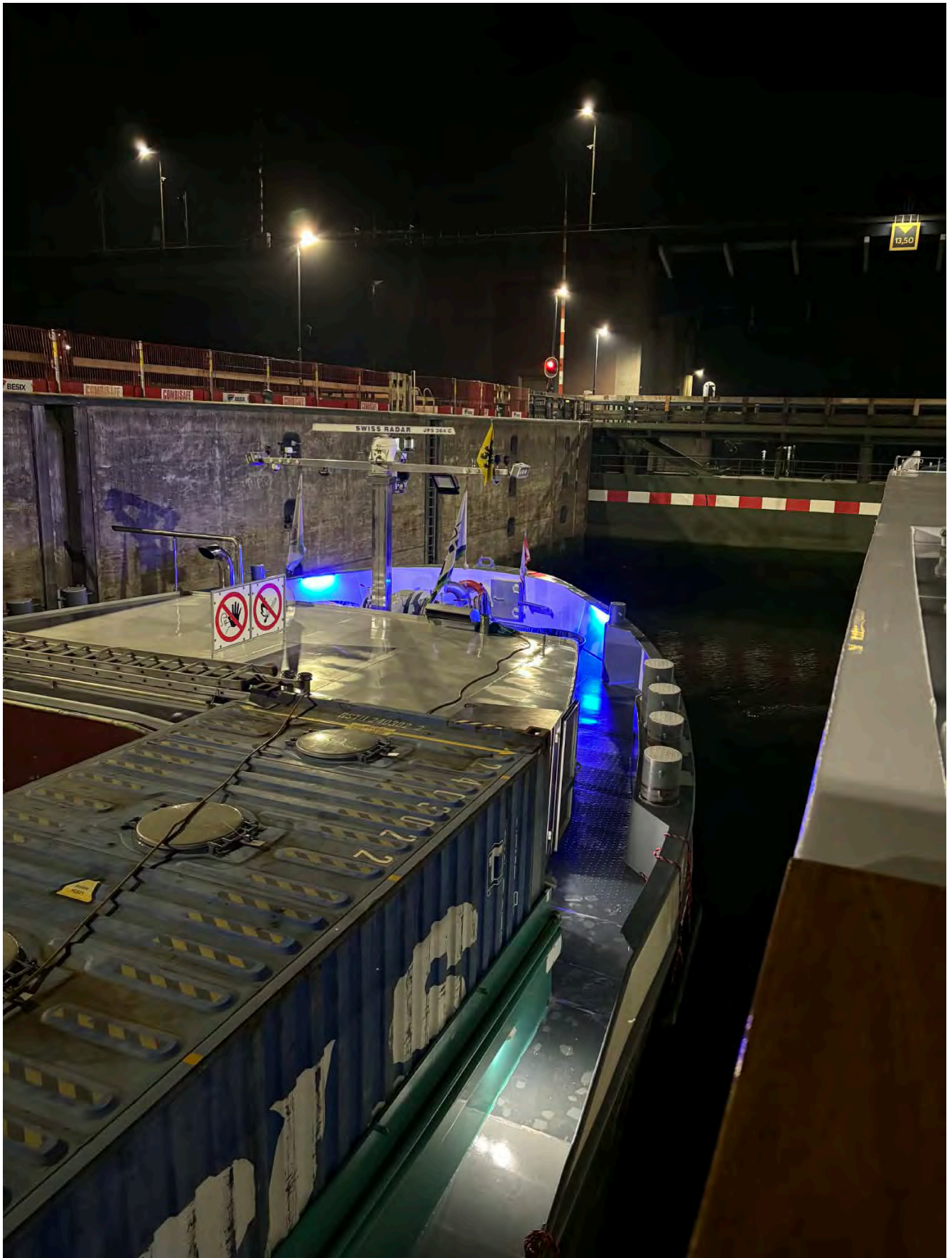


Donna Elliott, Vacation Travel Advisor | TICO Certified  
1-866-926-4070 ext 1203 | [delliott@harveysttravel-cwt.com](mailto:delliott@harveysttravel-cwt.com)  
<https://www.virtuoso.com/advisor/delliott>





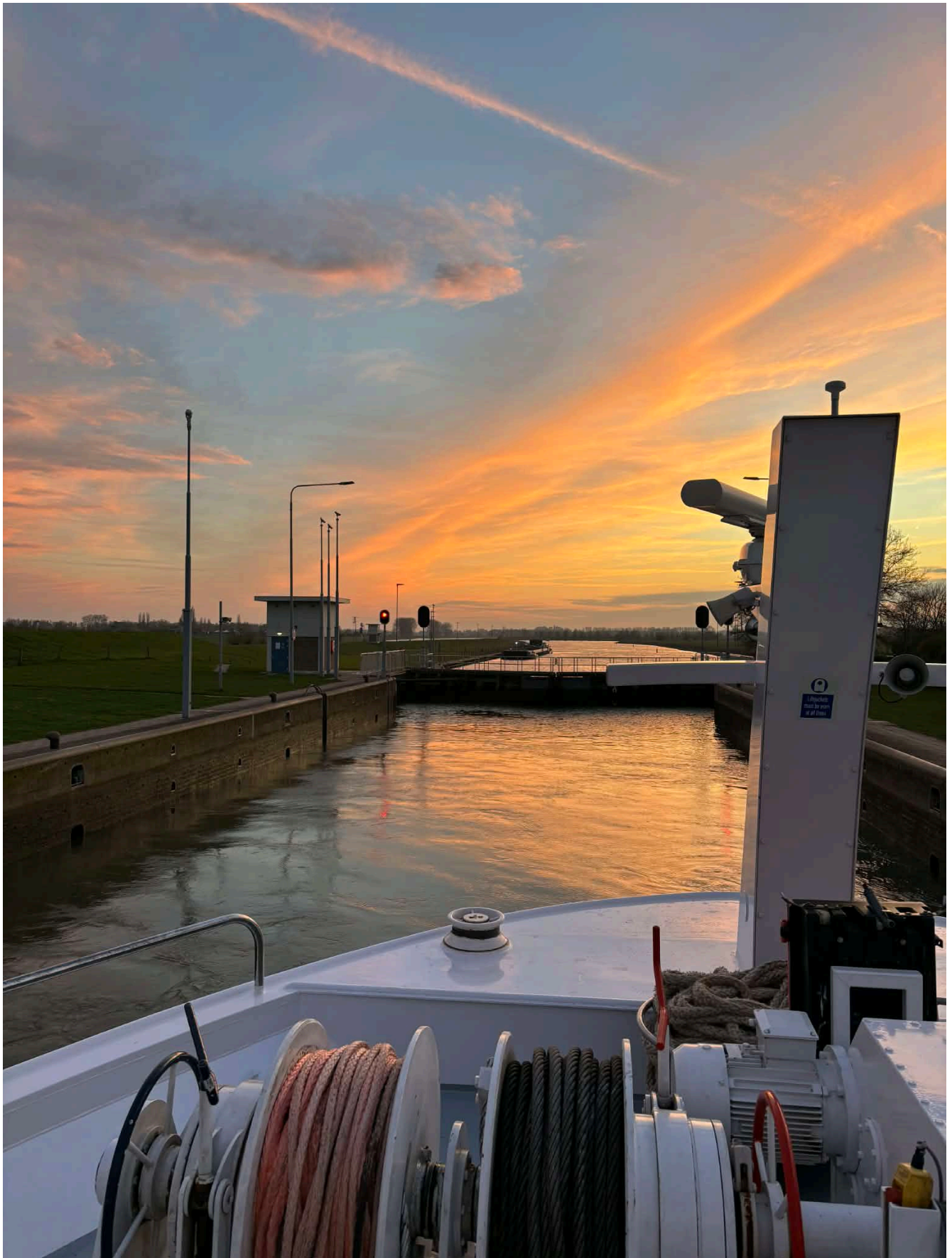
Donna Elliott, Vacation Travel Advisor | TICO Certified  
1-866-926-4070 ext 1203 | [delliott@harveysttravel-cwt.com](mailto:delliott@harveysttravel-cwt.com)  
<https://www.virtuoso.com/advisor/delliott>



Donna Elliott, Vacation Travel Advisor | TICO Certified  
1-866-926-4070 ext 1203 | [delliott@harveysttravel-cwt.com](mailto:delliott@harveysttravel-cwt.com)  
<https://www.virtuoso.com/advisor/delliott>



Donna Elliott, Vacation Travel Advisor | TICO Certified  
1-866-926-4070 ext 1203 | [delliott@harveysttravel-cwt.com](mailto:delliott@harveysttravel-cwt.com)  
<https://www.virtuoso.com/advisor/delliott>



Donna Elliott, Vacation Travel Advisor | TICO Certified  
1-866-926-4070 ext 1203 | [delliott@harveysttravel-cwt.com](mailto:delliott@harveysttravel-cwt.com)  
<https://www.virtuoso.com/advisor/delliott>

