



Follow me on my Scenic River Cruise Journey from Amsterdam

Day 3: Dordrecht

Arrived at Dordrecht at about 7 am- super foggy but pulled in right next to a paved area of a seawalk so seconds from centre of the city and you took 3 steps down a very short gangplank 😬

Boarded our bus for half hour drive to Delft - famous for the Delft Blue earthenware items fired here since the middle of 17th century in response to the interest in Chinese pottery the Dutch developed their own industry. Of over 30 mills at its peak, this one is a museum and factory and is last remaining one and really interesting to tour and see the 13 painters and 11 factory workers create these world famous, stunning pieces. Also time to spend in the shop which features both the original hand painted items and the newer (still dates from 150 years ago) method of using transfers so quicker to produce a less expensive.

After our visit of Delft factory, we did a quick walking tour during which the guide pointed out where William of Orange or William the Silent was assassinated then over the canal to see the Old Church with its 9 ton bell and tower which leans 2 metres- sinking due to the soft ground and dating from 13th century. We then made our way towards the Saturday market where we can see everything imaginable for sale from produce, flowers, prepared food, clothing, etc. with the Protestant New Church in Delft Market Square dating to 1300 where William of Orange or William the Silent is buried as well as many members of Dutch Royal Family in the Royal Crypt. Also known for selection of the wrong colour limestone for part of spire which resulted in the weather turning this part a lighter colour, so it looks a bit odd but too late to fix it now! This is at one end and directly across at other end is the ornate City Hall with locals and visitors alike relaxing at cafes in the square in the sunshine, catching up, people watching and doing their weekend shopping. What a perfect way to spend a beautiful spring day!

Anyone who knows me well knows my weakness for 2 things - cheese and chocolate. I was delighted to find Henri Willig Cheesemonger in Market Square which produces only Gouda cheese made from cow, sheep and goat milk- I was blow away by the incredible variety of flavours from pesto, beer, garlic, lavender, cumin, pepper, coconut, etc. a cheese lovers heaven- packed up and wax sealed so you can bring home to enjoy as it travels safely- not needing refrigeration for up to 30 days!

Headed back to our ship - Scenic Jewel which is docked in Dordrecht. Just a short gangway from ship to pavement- we are truly in the centre of this fascinating, bustling and not often visited Dutch city. There is such an incredible mix of the old and new here and again it's market day and it was hopping! Just a 15 minute walk from the ship I enjoyed a few hours checking out all the stalls bursting with some of the biggest and most vibrant flowers and plants, fresh fish and veggies, clothing and the famous stroopwafels - Dutch caramel cookies - they even had gluten and dairy free options too which was such a great find as they smelled so good and tasted even better 😊 Delicious!

I continued to wander this vibrant city and stumbled upon a statue of William and his faithful dog and a poignant memorial to several local people who had perished in concentration camps during the Second World War.

At one time there were over 100 windmills in Dordrecht but this is the last remaining one. It houses a cafe on second level and you can climb up several stories and even go outside on viewing platforms. I ended my walk here and headed back to the ship to get ready for dinner. What a day! I learned and saw so much in these 2 cities and did so very easily with my choice of an included excursion and my own free time to explore on my own.

To top it off I spend an hour in the Salt Therapy Lounge which is found on most Scenic ships.

There is a daily schedule called Scenic Wonder which you will find on your own tv- great reminder of next day's activities and excursion options, mealtimes and contact details for the ship. It came in handy when one of our party missed the coach back to the ship after an excursion. She reached out and a bus was dispatched to circle back and pick her up. It happens and Scenic made sure we knew how to reach out for help.

Ended the day with another outstanding meal in the Crystal dining room and a name that tune game in the Compass lounge- great ice breaker! We departed at 11:30 pm and the motion of the ship lulled us to sleep. Next stop - Bruinisse.

Check back tomorrow for Day 4: **Bruinisse**
 Today's Events and Photos from today.

SCENIC^o

DORDRECHT

Saturday
21st of March, 2026
08:30 - 23:00



Ship's docking location:
Merwekade

Ship's phone number:
00 49 173 615 3862

Cruise Director's phone number:
00 49 162 209 5812

Today's Events

Morning	Afternoon
08:30 Scenic Jewel arrives in Dordrecht 08:30 - 13:00 Gouda tour (Coach 1) 08:30 - 13:00 Delft tour (Coach 2) 09:00 - 11:00 Walking tour of Dordrecht Meet in the Lounge 09:30-12:00 Kinderdijk Windmills visit (Coach 3)	18:20 Behind the scenes with our Reservations Team (Jewel lounge) 18:45 Port Talk with Cruise Director Tadej (Jewel Lounge) 21:15 Name that Tune with Enrichment Manager Christina (Jewel Lounge) 23:00 All Aboard Scenic Jewel departs for Bruinisse

Opening Hours

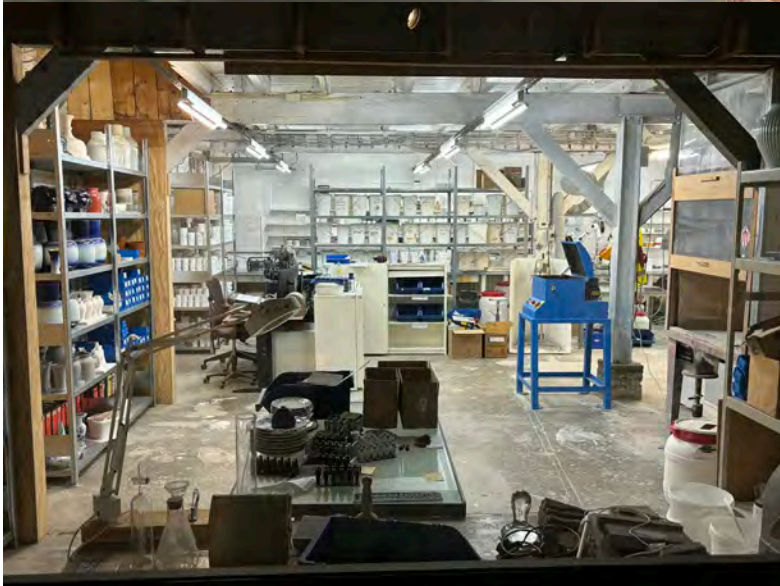
Crystal Dining	
Breakfast	07:00 - 08:30
Lunch	13:00 - 14:30
Dinner	19:00
Bar & Lounge	
Early Riser	06:00 - 09:00
Late Riser	08:30 - 09:30
River Café	11:00 - 17:30
Bar Service	09:00 - 01:00
Portobello Dinner (upon invitation)	
Service Hours	
Reception	24 hours
Wellness	08:00 - 21:00
Gym	24 hours



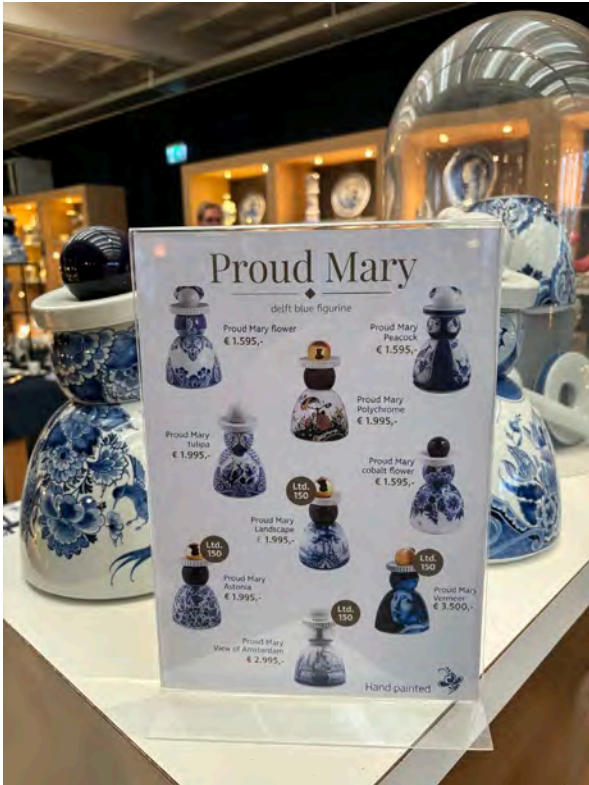
Book your massage appointment at the reception

Breakfast in the Crystal Dining Room, then Delft Pottery Factory



















Donna Elliott, Vacation Travel Advisor | TICO Certified
1-866-926-4070 ext 1203 | delliott@harveysttravel-cwt.com
<https://www.virtuoso.com/advisor/delliott>











HER WOONDE ZAAK PHILIP MEIJER GER. 1916 VERMOORD 30-10-1942 AUSCHWITZ	HER WOONDE KAREL MEIJER GER. 1912 VERMOORD 11-2-1943 GLECHAMMER	HER WOONDE ESTHER SERA MEIJER GER. 1922 VERMOORD 11-11-1942 AUSCHWITZ
HER WOONDE SALOMON HERMAN MEIJER GER. 1888 VERMOORD 12-2-1943 AUSCHWITZ	HER WOONDE BETJE MEIJER- BRAADBAART GER. 1892 VERMOORD 6-8-1943 SORBIBOR	



Donna Elliott, Vacation Travel Advisor | TICO Certified
1-866-926-4070 ext 1203 | delliott@harveysttravel-cwt.com
<https://www.virtuoso.com/advisor/delliott>