



Follow me on my Scenic River Cruise Journey from Amsterdam

Day 1: Embarkation Amsterdam

After a delayed flight, I arrived in Amsterdam and excited to begin my river cruise journey. Less than 30 minutes after leaving the airport, I was stepping aboard the lovely Scenic Jewel - docked in Amsterdam port - 5 minutes walk to Central Station. Docking locations can vary but are all minutes from the bustle and excitement of city centre.

Checking in was seamless and within five (5) minutes, I was settled into my deluxe balcony suite. Shortly after, my butler arrived to walk me through the many features I'll be enjoying, including:

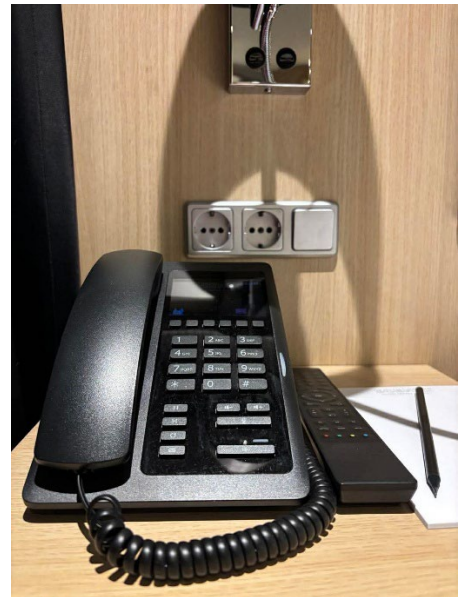
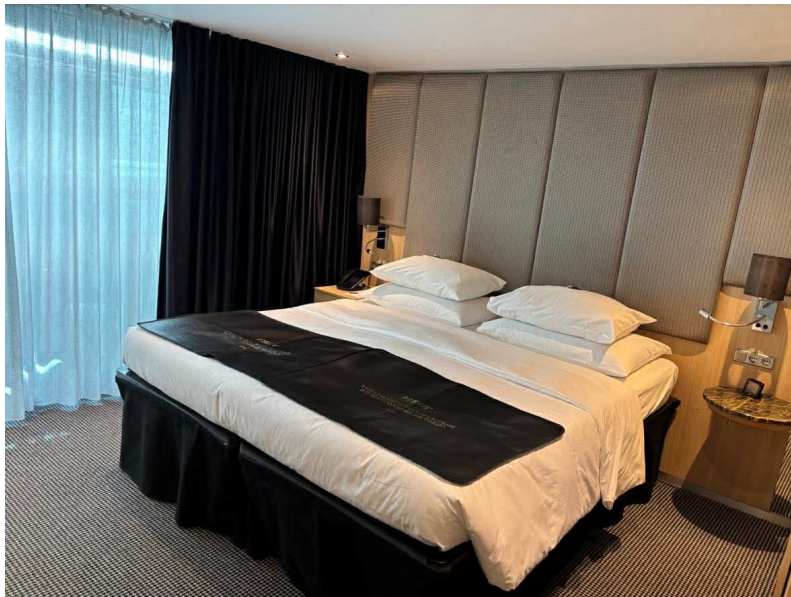
- Scenic sun lounge which at the touch of a button converts my open air balcony to a fully enclosed space,
- Scenic luxury slumber queen bed with pillow menu
- Plush robes, slippers, extra blankets, plentiful supply of soft cotton towels,
- Crisp Egyptian cotton bed linens,
- Dyson hair dryer, Braun alarm clock, and Samsung TV,
- Generous storage space so you can truly unpack and feel at home
- In room safe, daily replenished filtered water
- Refillable Scenic water bottles at onboard stations, supporting their commitment to reducing single-use plastics. Water bottles are yours to keep.
- Luxurious ESPA toiletries,
- A personalized restocked mini bar daily with alcohol, juice and pop,
- Early morning tea and coffee delivered by your butler – just one of the many thoughtful services provided

And another amazing feature - Quiet Vox- audio device you take on excursions enabling you to stray from the group a bit and still hear the guide's insights.

This evening I enjoyed a lovely dinner (see menu and picture below. Entertainment this evening was a Gala classical quartet in the Lounge.



Photos of Deluxe Balcony Suite:



Photos of Meal, Sample Menu and Entertainment:



Gala Classical Quartet performed in the Lounge



**Check back tomorrow for Day 2:
Amsterdam and an Excursion to the legendary Keukenhof Gardens.**